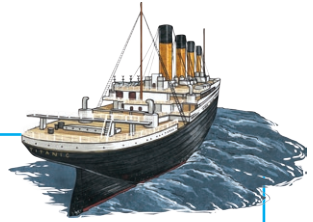


The Titanic

Titanic was a very big ship. It carried over 2000 people. Its first journey was from Southampton to New York but the ship never got to America.



What Could You Do on Titanic?

There were lots of things to do on Titanic if you were rich!

restaurants

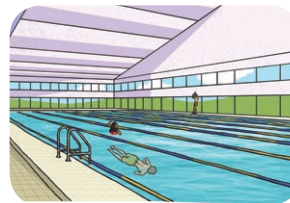


a pool



libraries

lifts

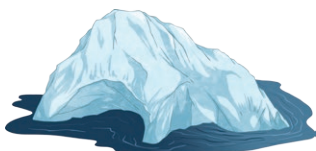


a gym

What Happened to Titanic?

Sadly, Titanic hit an iceberg and sank. Many people died.

Did You Know...?



1. Titanic was 269 metres long (the same length as three football pitches or 24 buses!).
2. The iceberg that hit Titanic was 30 metres tall.

Questions

1. How many people did Titanic carry? Tick one.

- ☐ over 1000
- ☐ over 2000
- ☐ over 3000

2. Where was Titanic going to? Tick one.

- ☐ New York
- ☐ Southampton
- ☐ Belfast

3. Tick one word to complete the sentence.

There were lots of things to do on Titanic if you were _____.

- ☐ poor
- ☐ sad
- ☐ rich

4. What did Titanic hit? Tick one.

- ☐ an iceberg
- ☐ a hill
- ☐ a wave

5. Which of these was not on Titanic? Tick one.

- ☐ a pool
- ☐ a cinema
- ☐ a gym

Answers

1. How many people did Titanic carry? Tick one.

- ☐ over 1000
- ☒ over 2000
- ☐ over 3000

2. Where was Titanic going to? Tick one.

- ☒ New York
- ☐ Southampton
- ☐ Belfast

Tick one word to complete the sentence.

There were lots of things to do on Titanic if you were _____.

- ☐ poor
- ☐ sad
- ☒ rich

3. What did Titanic hit? Tick one.

- ☒ an iceberg
- ☐ a hill
- ☐ a wave

4. Which of these was not on Titanic? Tick one.

- ☐ a pool
- ☒ a cinema
- ☐ a gym