

Spelling Shed

The regular use of Spelling Shed last half term had a hugely positive impact, so please ensure that children continues to log in for at least 10 minutes per evening.

Spelling tests will now take place weekly on **Fridays**.

Homework

Homework will be uploaded to Google Classroom every **Friday** - children need to complete all tasks and return them to school on the following **Tuesday**.

It is essential that your child engages with all of these tasks to ensure that they have an opportunity to secure their learning.

Children will begin to receive daily arithmetic homework, which will be linked to our class arithmetic intervention. These will be collected and marked daily.

Oracy

Year 6 will continue to have regular Oracy lessons, as well as oracy-based activities being an embedded part of our curriculum. The children have been developing fantastic vocabulary through their lessons and use this regularly when communicating with both adults and peers.

PSHE: Diverse Voices

This half term the children will be taking part on the Diverse Voices programme. The sessions will take place once a week and will cover topics that the children have been introduced to in PSHE lessons.



St John and St James C of E Primary School Class Newsletter

Dear parents and carers,

Happy New Year!

I hope you have all had a wonderful break over the Christmas period and are well-rested and ready to tackle the Spring term.

Important dates:

Friday 19th January - Class Assembly

Adults working in Year 6:

Miss Lawrence

Miss Uddin

Humanities - History

This half term we will be learning about **Ancient Maya** as part of our history lessons.



We will be focusing on exploring the ancient civilisation by making links between Ancient Maya and civilisations that we have studied in the past, like Ancient Greece and Rome.

We will also be using our history lessons to develop our critical thinking skills by beginning to understand how influential ancient civilisations are on the modern world as we know it today.

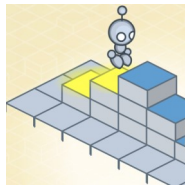
PE

PE will continue take place on **Friday**.



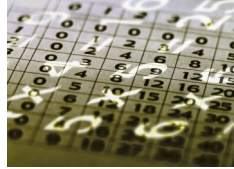
It is essential that your child has the correct school PE uniform for each session.

Computing



In Computing this half term, the children will be building on their prior **programming** skills by exploring and applying a range of variables in games.

Maths



This half term in maths, we will be focusing on the following fundamentals:

Measurements

* Convert between standard units of measure.

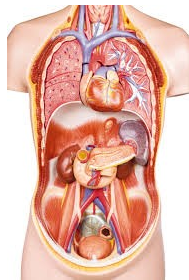
Algebra, Ratio & Proportion

- * Uses simple formulae and generates and describes linear number sequences.
- * Compares quantities using ratios.

Timestable Rockstars

It is really important that the children continue to work on securing their knowledge of multiplication and division facts up to 12×12 . Please ensure that your child is using TTRockstars for at least 10 minutes each evening.

Science



In science we will focus our learning around **Animals including Humans.**

We will be building on our prior knowledge and understanding of the human body exploring how controlled factors, like diet and exercise, can have positive and negative impacts on our bodies.

Our key scientist this half term is **Daniel Hale Williams**, who was an African-American general surgeon.

RE



In RE lessons, we will be focusing on the beliefs and traditions of **Buddhism**. We will be comparing Buddhism to other religions and discussing the positive impact that Buddhist teaching can have on our lives.

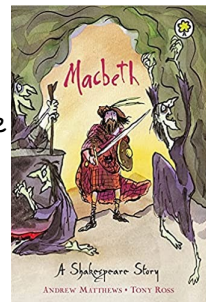
Home Reading



Children are expected to read for **at least 20 minutes** each night and make a record of this in their home reading journals. It is important that children record the **title** and **author**, as well as a **brief summary of what they have read**.

Reading books and journals **must be brought into school daily** as these will be checked every morning.

Writing



In writing this half term, we will be exploring the plot of the wonderful play, **Macbeth, by William Shakespeare.**

We will be using key parts of the storyline to inspire us to write poems and recounts. Each cycle of writing will provide us with an opportunity to introduce and develop new grammar skills, including:

- **Prepositional phrases**
- **Direct Speech**
- **Use of parenthesis**

We will continue to use our edit lessons to review our writing targets and set new focuses for the following cycle. Look out for some of our published work on Seesaw!